



WHAT'S NEW IN
SAP® BusinessObjects™ EDGE BI
BUSINESS INTELLIGENCE SOFTWARE
FOR MIDSIZE COMPANIES

CONTENT

4	SAP BusinessObjects Edge Business Intelligence	9	Joining Search and BI
5	Overview of SAP BusinessObjects Edge BI	10	Scalable, Personalized BI Report Publishing
5	Guiding Principles Behind SAP BusinessObjects Edge BI	11	Data Quality
5	Key Benefits	11	Find Out More
6	Open and Heterogeneous Solution		
6	BI Integration for Oracle E-Business Suite		
6	BI Integration for JD Edwards EnterpriseOne		
7	BI Integration for Siebel Software		
7	BI Integration for PeopleSoft Software		
8	Integration with Microsoft Office to Benefit Business Users		
8	Integration with Other Microsoft Software		

Overview

The new release of SAP® BusinessObjects™ Edge Business Intelligence (BI) software offers BI solutions that help midsize companies improve business processes, anticipate and respond to the changing environment, discover opportunities, and gain an advantage over the competition. The robust software delivers affordable functionalities that address virtually any BI requirement – operational reporting; flexible, ad hoc query and analysis; dashboards and visualization; and powerful data quality and management. SAP BusinessObjects Edge BI is open and works with software from Oracle Corporation and Microsoft Corporation.

SAP® BusinessObjects™ EDGE BUSINESS INTELLIGENCE

ROBUST FUNCTIONALITY FOR
MIDSIZE COMPANIES



The new release of SAP BusinessObjects Edge BI has been enhanced to provide even tighter integration with other SAP and non-SAP software – delivering an extensive BI solution for SAP customers. SAP BusinessObjects Edge BI is open and works within nearly any organization’s environment – whether you’re currently using software from SAP, Oracle Corporation, or Microsoft Corporation.

The latest release of SAP® BusinessObjects™ Edge Business Intelligence (BI) software builds on SAP BusinessObjects Enterprise software and offers a powerful intelligence platform for heterogeneous environments. It provides refined, intuitive functionalities for business users at all levels and real-world deployment flexibility.

SAP BusinessObjects Edge BI maintains the strategy of being accessibly priced software that is designed and packaged for midsize companies to meet your requirements today and support your growth as needs develop. In addition to a standard package and one with data integration, SAP now offers a package with data management. The offering is available in three versions, as SAP BusinessObjects Edge BI software:

- Standard package
- With data integration
- With data management

In this document, we give you a high-level overview of SAP BusinessObjects Edge BI and the functionalities covered in the new release:

- Oracle and Microsoft integration kits
- Data exploration software in SAP BusinessObjects Edge BI
- Report publishing
- Data quality

OVERVIEW OF SAP BusinessObjects EDGE BI

OPEN SOLUTION WITH INNOVATIVE FEATURES

With the report publishing or bursting functionality in SAP BusinessObjects Edge BI, you can personalize and mass distribute relevant information to people inside and outside your organization. Scheduling and publishing software lets you automatically distribute performance management metrics and reports from SAP BusinessObjects Web Intelligence, SAP BusinessObjects Desktop Intelligence, and Crystal Reports.

SAP BusinessObjects Edge BI connects your business users by removing boundaries for sharing information. Its innovative functionality supports all types of business users – analysts, casual users, managers, and executives – and transcends company walls to extend to customers and partners.

The software helps companies deliver an interactive user experience that brings their business users together. It offers intuitive features that help simplify the way business users make timely, informed decisions in the context of their roles and contributions to overall company goals. It provides powerful functionality for operational reporting; flexible, ad hoc query and analysis; dashboards and visualization; and data quality and management. SAP

BusinessObjects Edge BI is open and works within nearly any organization's environment – whether you're currently using software from SAP, Oracle Corporation, or Microsoft Corporation.

Guiding Principles Behind SAP BusinessObjects Edge BI

At SAP, we build every product release and version around guiding principles that are based on key customer and market requirements. The guiding principles for SAP BusinessObjects Edge BI are to:

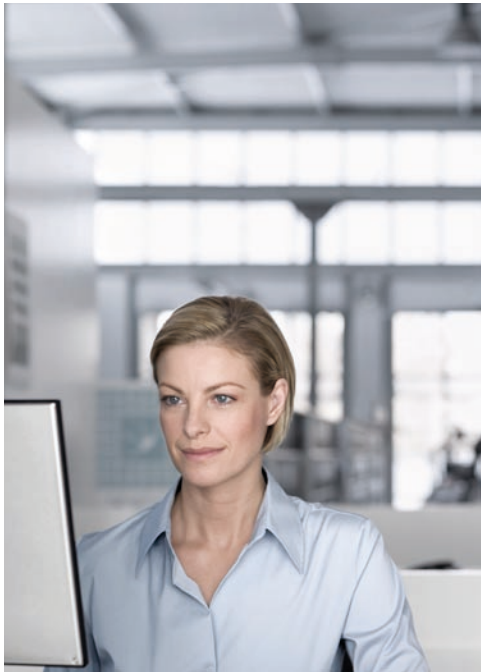
- Make BI accessible, actionable, and personal to the way people use it, while offering a full-spectrum solution for their BI needs
- Deliver innovative functionality to help drive productivity across an organization

- Strive for simplicity for all types of users to help drive more BI adoption toward improving organization-wide decision-making processes

Key Benefits

SAP BusinessObjects Edge BI software provides:

- The connection of business users at any level with all key information through a comprehensive BI solution that facilitates information sharing within the context of their activities
- An interactive user interface that helps business users get the information they want, in the way they want it, and when they want it – beyond system boundaries
- A data foundation that helps ensure that decisions are based on trustworthy information, no matter where the source of the data resides



OPEN AND HETEROGENEOUS SOLUTION

FLEXIBILITY IN LEVERAGING MICROSOFT AND ORACLE APPLICATIONS

Data exploration software in SAP BusinessObjects Edge BI brings together functionality for intuitive search, powerful BI, and analysis to help users find immediate answers to business questions. And SAP BusinessObjects Web Intelligence allows for self-service access to data and intuitive information analysis. All of this functionality is available in the latest release of SAP BusinessObjects Edge BI.

The new release of SAP BusinessObjects Edge BI has been enhanced to provide even tighter integration with other SAP and non-SAP software – delivering an extensive BI solution for SAP customers.

BI Integration for Oracle E-Business Suite

The software has extended integration with Oracle E-Business Suite, helping you extract valuable customer information to make better business decisions. It includes a set of data drivers and integrated security functions to deliver rich, visual, and interactive reports for the Oracle E-Business Suite environment.

The integration for Oracle E-Business Suite connects Crystal Reports® software and SAP BusinessObjects Edge BI directly with your Oracle E-Business Suite system and includes:

- A native Unicode-compliant driver connecting Crystal Reports directly to Oracle E-Business Suite data. It honors any human resource management system security defined in your Oracle E-Business Suite system when the reports are used in SAP BusinessObjects Edge BI.

- A security plug-in that allows business users of Oracle E-Business Suite to enter the same credentials when logging into SAP BusinessObjects Edge BI
- Central management and administration software that maps responsibilities to groups, assigning user and group rights and security settings in SAP BusinessObjects Edge BI

BI Integration for JD Edwards EnterpriseOne

SAP BusinessObjects Edge BI has extended integration with Oracle's JD Edwards EnterpriseOne to help business users have a more fluid user experience.

The software contains a complete set of BI tools to extract the value stored in data, including:

- A native driver connecting Crystal Reports directly to JD Edwards EnterpriseOne tables
- A security plug-in allowing business users of JD Edwards EnterpriseOne to enter the same credentials when logging into SAP BusinessObjects Edge BI
- A Web-based interface to central management software to manage security settings and user roles

BI Integration for Siebel Software

The software has extended integration with Oracle's Siebel software and Crystal Reports so business users can extract valuable customer information to make better business decisions. It includes a set of data drivers, integrated security, and custom user interfaces that deliver rich, formatted, interactive reports for the Siebel environment. The software includes:

- A native driver for Crystal Reports that supports Siebel Customer Relationship Management 7.5, 7.7, and 8.0, and is designed specifically for reporting from Siebel data. With SAP BusinessObjects Edge BI, you can connect to Siebel data sources, design reports with functionality in Crystal Reports, and run the reports against your Siebel system.
- A security plug-in that lets you map Siebel responsibilities to SAP BusinessObjects Edge BI. The software can then authenticate users against the Siebel system so they can log into SAP BusinessObjects Edge BI with their usual Siebel credentials.
- Contextual awareness functionality that presents business users with reports likely to be relevant to their current task. Users accessing Crystal

Reports directly from a Siebel client application are automatically shown reports incorporating Siebel data.

The software's integration not only helps users make the most of the information stored in Siebel systems such as Siebel Marketing or Siebel Contact Center, but also helps them leverage data that is not for customer relationship management. In addition, SAP BusinessObjects Edge BI offers analytics dashboards and scorecards, financial planning and budgeting functionalities, integration with Microsoft Office environments, and self-service query and analysis. All of this helps provide insight into your customer base and supports your business users in making better decisions.

BI Integration for PeopleSoft Software

SAP BusinessObjects Edge BI extends its integration with Oracle's PeopleSoft software. Business users can have one platform for both ad hoc query and analysis from PeopleSoft Enterprise Performance Management (EPM) and operational reporting from Crystal Reports that draws on transactional PeopleSoft applications.

The software offers integration with PeopleSoft Enterprise applications through native data connectivity and provides secure access using single sign-on and the existing security model. Additionally, it allows you to organize and display BI within your existing enterprise portals, view and edit BI content, schedule reports, and integrate BI content in existing workflows. The software includes:

- A native Unicode-compliant driver connecting Crystal Reports directly to PeopleSoft data
- A security plug-in allowing business users of PeopleSoft Enterprise to enter the same credentials when logging onto SAP BusinessObjects Edge BI
- Central management and administration functionality with roles and responsibilities, users and groups, and security settings
- Contextual awareness functionality and the ability to link directly from within PeopleSoft menus and business components to the relevant folders in SAP BusinessObjects Edge BI and Crystal Reports
- A security bridge that integrates SAP BusinessObjects Edge BI with PeopleSoft EPM and allows users to view PeopleSoft data when accessing a semantic layer in SAP BusinessObjects Edge BI software



New data-quality functionalities for customers using SAP BusinessObjects Edge BI software, version with data management, enable business users to centralize the discovery, correction, and prevention of data-quality issues across their organization. You can integrate functionality for address verification to help ensure the data integrity of your customer information at any country level. This functionality intelligently matches address data, and it reviews and makes potential changes to data records.

Integration offers several key benefits to PeopleSoft business users. You can rely on Crystal Reports to gain access to any PeopleSoft system, whether it is for human resources or a general ledger system. The functionality is completely transparent to business users, who can sign on to SAP BusinessObjects Edge BI using their PeopleSoft credentials. With Crystal Reports, business users can access familiar reports that deliver the information they need to make better decisions. The integration software is designed to work with earlier versions of PeopleSoft Enterprise, allowing business users to unlock the value of their data without having to upgrade.

And through the security bridge for PeopleSoft EPM, business users can perform ad hoc analysis to answer critical business questions toward improving enterprise performance. To offer you even more choices, the software is available with integration for PeopleSoft Enterprise applications for both Microsoft Windows and Linux platforms.

Integration with Microsoft Office to Benefit Business Users

The new release of SAP BusinessObjects Edge BI extends its integration within a Microsoft Office environment through search functions, integration with Microsoft Office

Outlook, and support for Microsoft Office Fluent Ribbon in Microsoft Office 2007. You can also benefit from software for semantic layer-level security, query-panel enhancements, and user-specified viewing locale.

Integration with Other Microsoft Software

SAP BusinessObjects Edge BI supports Microsoft Windows Server 2008, Microsoft SQL Server 2008, Microsoft Windows SharePoint Services, and Microsoft Office SharePoint Server 2007, and offers native support for Microsoft .NET for software development.

SAP BusinessObjects Edge BI also provides an answer for organizations wishing to extend insight from BI to any Web or Microsoft .NET application. IT departments and developers can reuse the functionalities of SAP BusinessObjects BI solutions for scheduling and security or embed existing application content by using our updated BI software development kit for Microsoft .NET.

JOINING SEARCH AND BI

INTUITIVE FUNCTIONS, FASTER SEARCH, AND ANALYTICS

In order to make everyday business decisions, business users depend on the ability to access and understand information. Unfortunately, recent surveys show that they often rely on “gut-feel” decision making due to lack of time or ability to use the powerful BI tools that could provide them with this much-needed data. These same business users, however, often have no trouble searching for information online or browsing for books on Amazon.com. What if your organization could combine the simplicity of search with the power of BI?

Support comes from two SAP BusinessObjects BI solutions: data exploration software in SAP BusinessObjects Edge BI brings together functionality for intuitive search, powerful BI, and analysis to help users find immediate answers to business questions. And SAP BusinessObjects Web Intelligence® software allows for self-service access to data and intuitive information analysis. All of this functionality is available in the latest release of SAP BusinessObjects Edge BI. You can employ familiar keyword searches to find information hidden in data sources. You can then navigate and explore directly on data; no existing reports and metrics are necessary. For example, you can:

- Start by entering a few search keywords
- View results and then explore via an exploration panel
- Automatically generate charts for optimal results
- Share results via e-mail and various file formats
- Leverage software for intuitive information analysis and self-service access data
- Access information through software with enhanced security functionality



The software helps companies deliver an interactive user experience that brings their business users together. It offers intuitive features that help simplify the way business users make timely, informed decisions in the context of their roles and contributions to overall company goals.

SCALABLE, PERSONALIZED BI REPORT PUBLISHING

DISTRIBUTING TAILORED INFORMATION INTERNALLY AND EXTERNALLY

SAP BusinessObjects Edge BI maintains the strategy of being accessibly priced software that is designed and packaged for midsize companies to meet your requirements today and support your growth as needs develop.

With report publishing or bursting functionality, you can personalize and mass distribute relevant information to people inside and outside your organization. Scheduling and publishing software lets you automatically distribute performance management metrics and reports from SAP BusinessObjects Web Intelligence, SAP BusinessObjects Desktop Intelligence™ software, and Crystal Reports. The combination of role-based security and report publishing functionality in SAP BusinessObjects Edge BI helps business users, administrators,

and IT departments to quickly extend BI to constituents and deliver the right information to the right people.

You can distribute documents on virtually any timetable, including by the minute and by hourly, daily, or weekly schedules, as well as on month-end or quarter-end business calendars. You can publish personalized reports to thousands of recipients in a single session. Business users can share documents via e-mail or send them to a system in-box, printer, or file – in several different formats – allowing for further collaboration.

The report publishing functionality in SAP BusinessObjects Edge BI lets you distribute information with different data views to different recipients. Depending on the object type, you can schedule publishing of objects to different formats, such as Microsoft Excel, Microsoft Word, Adobe PDF, and text. And you can send them to different destinations, including e-mail and Web addresses, printers, and file servers. All this helps you to get personalized, relevant information into the hands of the right people, at the right time, in the right format.

DATA QUALITY

HELPING BUSINESS USERS ACCESS TRUSTED, TIMELY DATA

New data-quality functionalities for customers using SAP BusinessObjects Edge BI software, version with data management, enable business users to centralize the discovery, correction, and prevention of data-quality issues across their organization. You can integrate functionality for address verification to help ensure the data integrity of your customer information at any country level. This functionality intelligently matches address data, and it reviews and makes potential changes to data records. This robust BI software is a major breakthrough for organizations that typically manage data in manual processes involving many people. Trusted data and timely, accurate information helps provide your business users with a solid foundation for decision making.

Find Out More

To learn more about SAP BusinessObjects Edge BI, please call your SAP representative or visit www.sap.com/sapbusinessobjects.



50 094 900 (09/04)

©2009 by SAP AG.

All rights reserved. SAP, R/3, SAP NetWeaver, Duet, PartnerEdge, ByDesign, SAP Business ByDesign, and other SAP products and services mentioned herein as well as their respective logos are trademarks or registered trademarks of SAP AG in Germany and other countries.

Business Objects and the Business Objects logo, BusinessObjects, Crystal Reports, Crystal Decisions, Web Intelligence, Xcelsius, and other Business Objects products and services mentioned herein as well as their respective logos are trademarks or registered trademarks of Business Objects S.A. in the United States and in other countries. Business Objects is an SAP company.

All other product and service names mentioned are the trademarks of their respective companies. Data contained in this document serves informational purposes only. National product specifications may vary.

These materials are subject to change without notice. These materials are provided by SAP AG and its affiliated companies ("SAP Group") for informational purposes only, without representation or warranty of any kind, and SAP Group shall not be liable for errors or omissions with respect to the materials. The only warranties for SAP Group products and services are those that are set forth in the express warranty statements accompanying such products and services, if any. Nothing herein should be construed as constituting an additional warranty.

www.sap.com/contactsap

THE BEST-RUN BUSINESSES RUN SAP™

